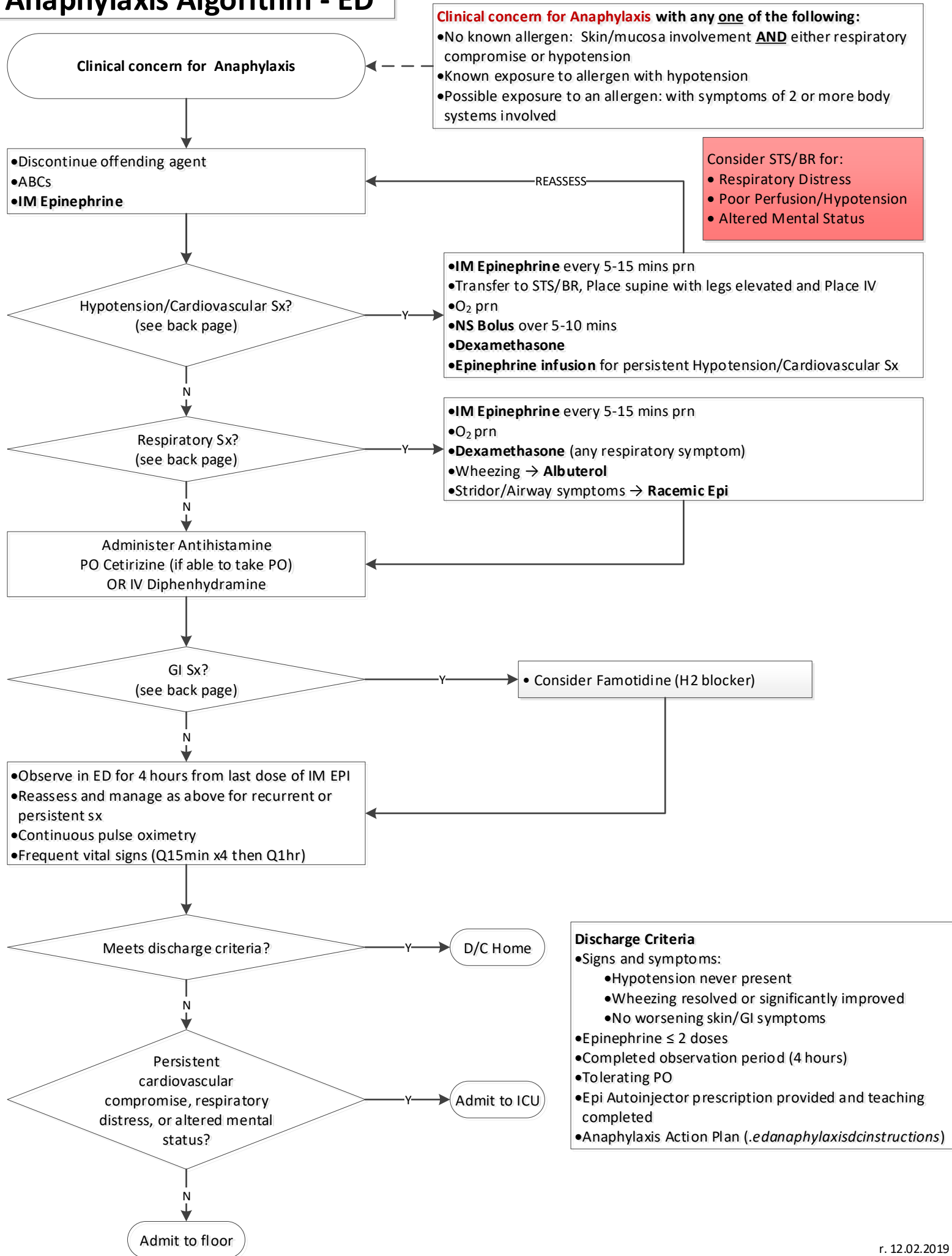


Anaphylaxis Algorithm - ED



Body System	Signs and Symptoms
Skin/mucosa	Itching, flushing, urticaria, angioedema, morbilliform rash, swelling of lips/tongue/uvula, piloerection
Respiratory	Nasal congestion or itching, rhinorrhea, sneezing, throat itching or tightness, dysphonia, hoarseness, stridor, repetitive throat clearing, cough, tachypnea, wheezing, dyspnea, shortness of breath, hypoxia, cyanosis, respiratory arrest
Gastrointestinal	Abdominal pain, nausea, vomiting, diarrhea, dysphagia, metallic taste
Cardiovascular	Chest pain, tachycardia, bradycardia, arrhythmias, palpitations, hypotension (which may manifest as urinary or fecal incontinence), other signs of end-organ dysfunction, cardiac arrest
Central Nervous System	Uneasiness or sense of impending doom, sudden behavioral change (in nonverbal patients), altered mental status, headache, tunnel vision, dizziness, confusion, syncope, hypotonia

Medications in the ED

- **IM Epinephrine:** Administer into anterolateral thigh when patient is safely and properly restrained.
 - < 10 kg: 0.01 mg/kg (use the 0.1 mg/mL concentration IM as described in code book for dilution reasons)
 - 10-24.9 kg: 0.15 mg IM
 - ≥ 25 kg: 0.3 mg IM
- **Epinephrine continuous infusion:** 0.1-1 mcg/kg/min IV (maximum 10 mcg/kg/min or 1.5 mg/h if continuous).
- **Cetirizine:** 6 months to 5 years: 2.5 mg PO
≥ 6 years: 5 to 10 mg PO
- **Diphenhydramine:** 1 mg/kg (max 50 mg) IV over 10 mins
- **Dexamethasone:** 0.6 mg/kg (max 10 mg) PO/IV/IM
- **Albuterol:** Use Albuterol MDI & Spacer (preferred)
- **Albuterol MDI & Spacer:**
 - < 15 kg: 4 puffs
 - ≥ 15 kg: 8 puffs
- **Racemic Epinephrine:** 2.25% (0.5 mL drug mixed in 3 mL NS) nebulization every 20 mins for upper airway obstruction
- **Famotidine:**
 - 0.25 mg/kg/dose IV (max. 20 mg)
 - 0.5 mg/kg/dose PO (max. 20 mg)

Medications for Discharge

All patients should receive prescriptions for:

- **Epinephrine auto-injector** with teaching
- **Cetirizine:** 6 months to 5 years: 2.5 mg once daily for minimum of 5 days
≥ 6 years: 5 to 10 mg once daily for minimum of 5 days

Patients receiving meds in ED should receive same for home use:

- **Dexamethasone:** give 2nd dose in-hand at discharge if known history of asthma or persistent wheezing
 - < 15 kg: Dexamethasone 6 mg PO (36-48 hrs after initial dose)
 - ≥ 15 kg: Dexamethasone 10 mg PO (36-48 hrs after initial dose)
- **Albuterol:** give MDI in-hand at discharge, or if received neb, provide a prescription for an MDI with spacer
 - < 15kg: Albuterol MDI & Spacer 4 puffs (Q 4 hr x 24 hrs then Q6 hrs prn)
 - ≥ 15kg: Albuterol MDI & Spacer 6 puffs (Q 4 hr x 24 hrs then Q6 hrs prn)
- **Famotidine:** ≥ 3 months: 0.5 mg/kg/dose (max. 20 mg per dose) twice daily for 5 days